

# THE OUTSTANDING EVENTS COMPANY

COMPANY



## X-Blaster



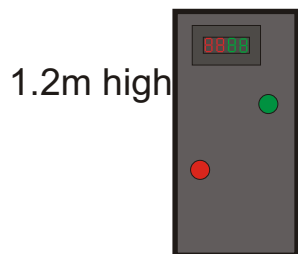
### Electricity required

We need either a standard 13amp or industrial 16amp socket within 10m of the game.

We can provide longer cables if we are given advance notice.

X-Blaster can be set up in three different ways depending on space available either indoors or outdoors. If being used outdoors the unit must be placed under cover. We can supply a tent to fit option B only. For best use, X-Blaster should be used in a dark room.

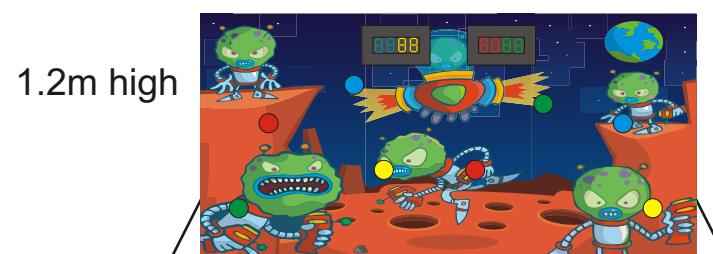
Option A - black only



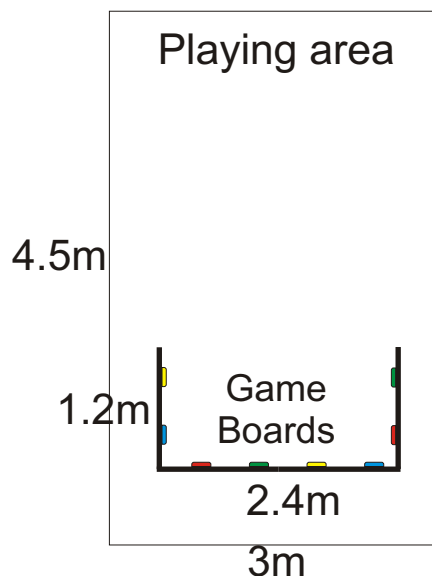
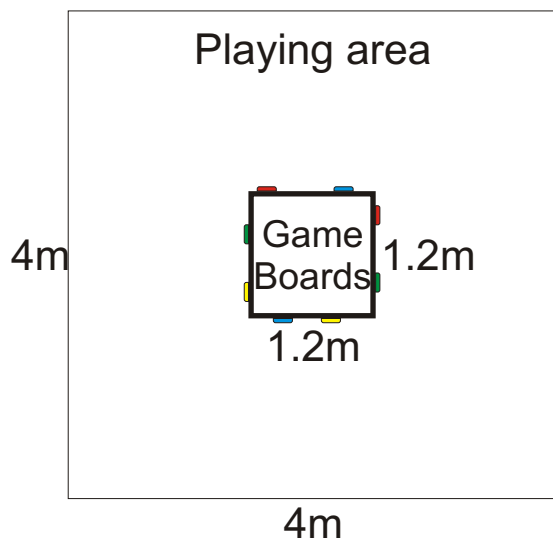
Option B - black or Alien backdrop



Option C - Alien backdrop only



Views from the front



Views from above

